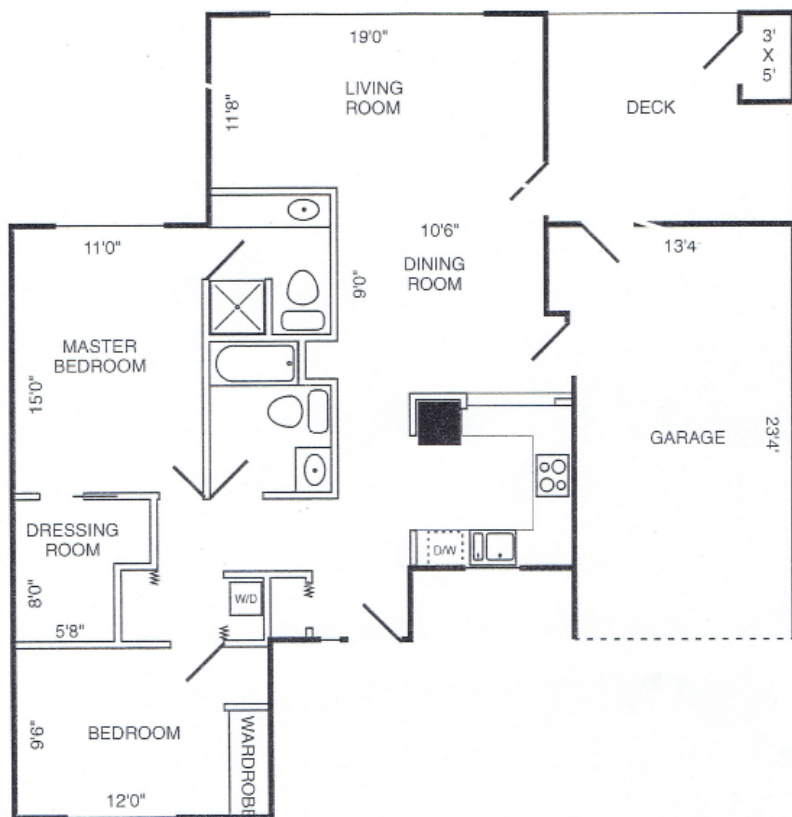
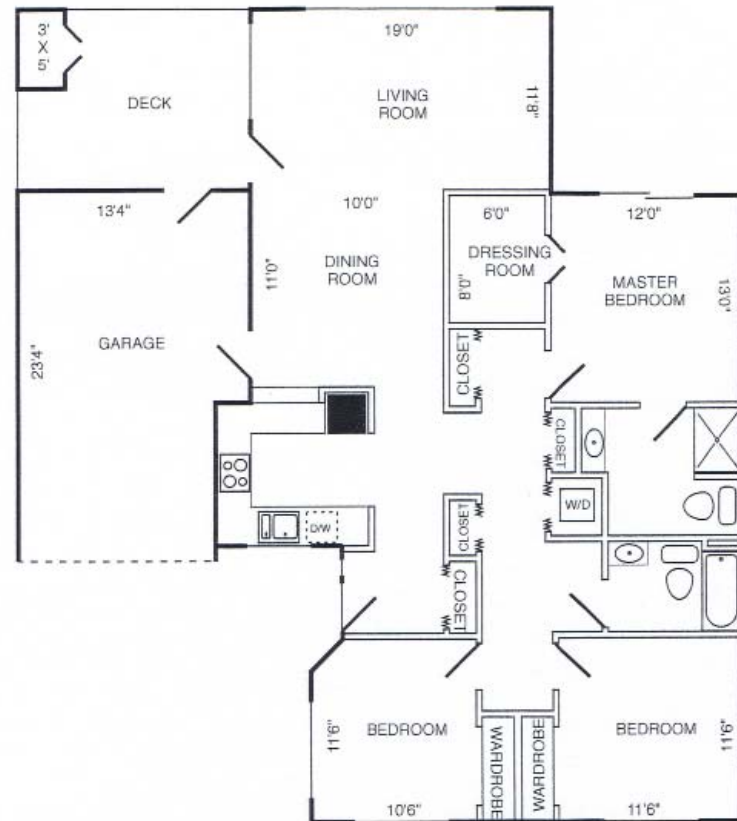


The Town Homes offer a formal dining area, walk in closets in the master bedroom and a spacious deck, complete with garden shed. Accessible both from an external neighborhood street and from the main campus of Capital Manor, the location is private without being secluded, especially with an 24 hour emergency call system in every unit. The Townhomes are built around the Glen, a natural wetlands area, providing wildlife viewing from the comfort of your living room.



**Two Bedroom  
1,178 square feet**



**Three Bedroom  
1,459 square feet**